

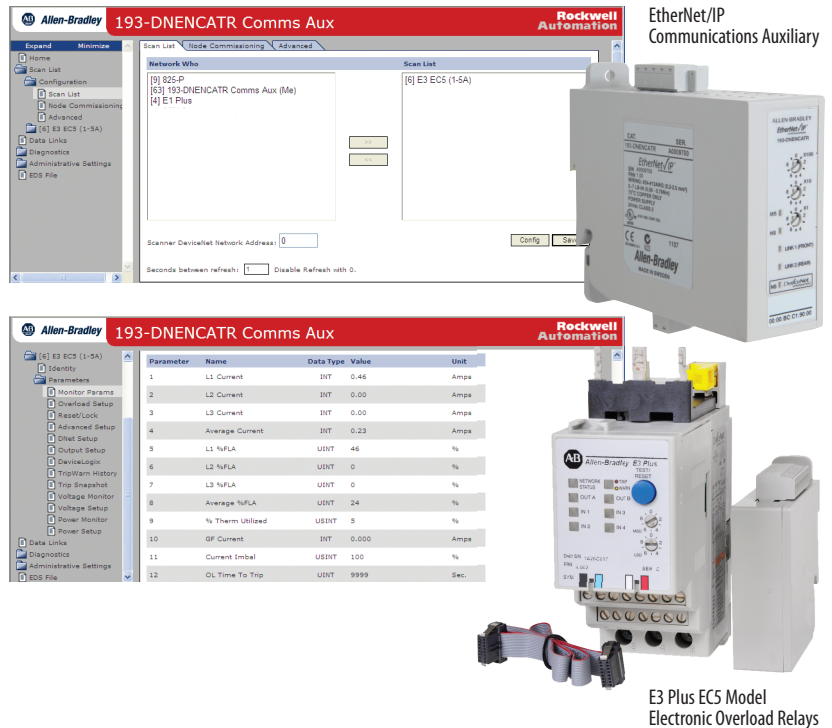
EtherNet/IP™ Communications Auxiliary for DeviceNet™ Components



Bulletin 193 - DNENCAT, - DNENCATR

Advantages

- Real-time diagnostics of your intelligent devices help you to minimize unplanned downtime
- Embedded Web interface allows easy access for device configuration
- EtherNet/IP allows access to your devices from any PC without special software
- Supports DeviceNet-based products, such as:
 - E1 Plus Electronic Overload Relay
 - E3 and E3 Plus Electronic Overload Relay
 - 825-P Modular Protection System
 - DeviceNet Starter Auxiliary
 - XM: Vibration Module
 - Legacy Drives
 - Sensors



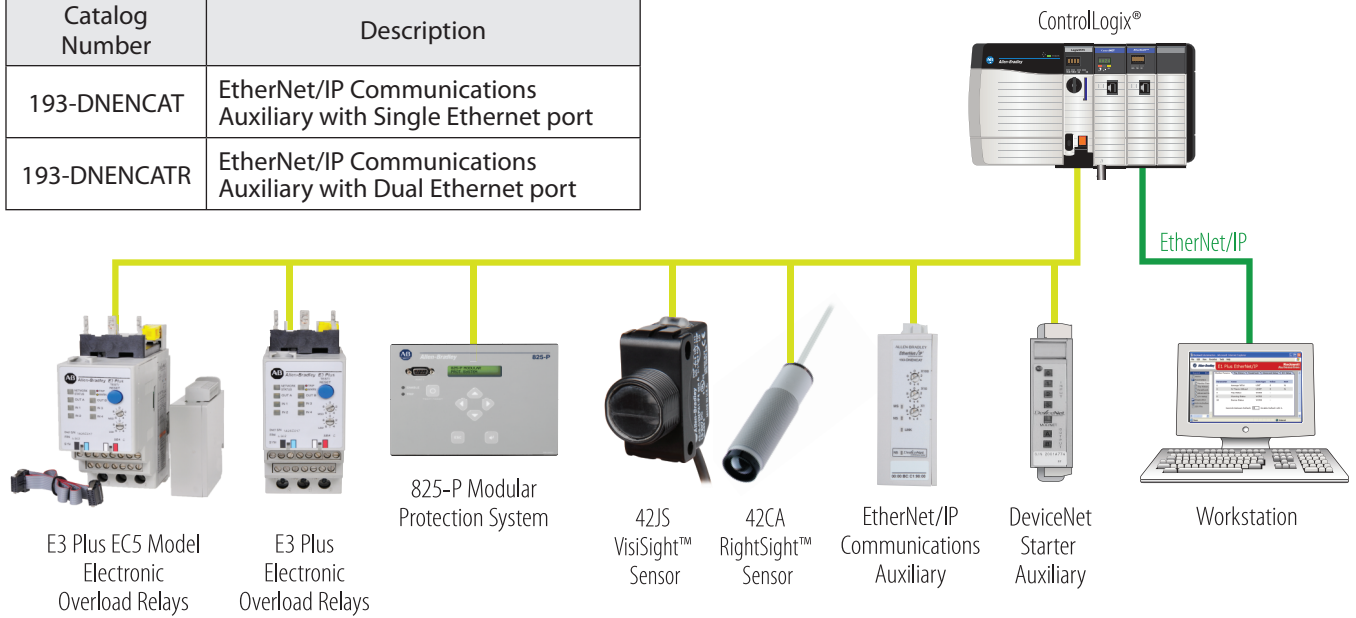
Overview

The EtherNet/IP Communications Auxiliary allows your DeviceNet-based products to seamlessly communicate on an EtherNet/IP network. The information from these intelligent devices helps you minimize unplanned downtime, increase efficiencies for startup and collect energy consumption information for sustainability programs.

- Supports up to six (6) DeviceNet-based devices
- Acts as a linking device passing EtherNet/IP explicit and I/O messages
- Does not require RSNetWorx™ for DeviceNet for network configuration
- Users can utilize RSLinx® Classic to serve DeviceNet-based device parameters via Microsoft OPC
- Users have the option to connect to a DLR (Device Level Ring) network topology with two Ethernet ports
- Automatic Device Replacement (ADR) capabilities available for DeviceNet-based devices
- Add-On Profile (AOP) simplifies the integration into a Logix system

LISTEN.
THINK.
SOLVE.®

Catalog Number	Description
193-DNENCAT	EtherNet/IP Communications Auxiliary with Single Ethernet port
193-DNENCATR	EtherNet/IP Communications Auxiliary with Dual Ethernet port



Controller Tags - AOP_Test(controller)

Scope: AOP_Test Show: All Tags

Name	Value
CommsAux:0	{...}
CommsAux:1	{...}
CommsAux:1.Fault	{...}
CommsAux:1.DnetStatus	{...}
CommsAux:1.DeviceDnetStatus	{...}
CommsAux:1.EC5	{...}
CommsAux:1.AdvancedDataEC5	{...}
CommsAux:1.AdvancedDataEC5[0]	{...}
CommsAux:1.AdvancedDataEC5[0].AvgCurrent	0
CommsAux:1.AdvancedDataEC5[0].AvgPercentFLA	0
CommsAux:1.AdvancedDataEC5[0].PercentTCU	0
CommsAux:1.AdvancedDataEC5[0].GroundFaultCurrent	0
CommsAux:1.AdvancedDataEC5[0].AvgVoltage	0
CommsAux:1.AdvancedDataEC5[0].kW	0
CommsAux:1.AdvancedDataEC5[0].kVA	0
CommsAux:1.AdvancedDataEC5[0].PowerFactor	0
CommsAux:1.AdvancedDataEC5[1]	{...}
CommsAux:1.AdvancedDataEC5[2]	{...}
CommsAux:1.AdvancedDataEC5[3]	{...}
CommsAux:1.AdvancedDataEC5[4]	{...}

Monitor Tags / Edit Tags /

Module Properties: LocalENB (193-DNENCAT 1-1)

General Connection Module Info Internet Protocol Port Configuration

Type: 193-DNENCAT E3 Plus Communications Interface, Twisted Pair Media

Vendor: Allen-Bradley

Frame: LocalENB

Ethernet Address

Name: CommsAux

Private Network: 192.168.1.12

IP Address

Host Name

Module Definition

Series: A

Revision: 1.1

Electronic Keying: Compatible Module

Connection: Data

Data Mapping: EC1 Data

Module Definition

Series: A

Revision: 1

Electronic Keying: Compatible Module

Connection: Data

Data Mapping: EC1 Data

Comms: EC1 Data, EC2 Data, EC3 Data, EC4 Data, EC5 Data, ECSP Data

Status: Offline

Allen-Bradley, ControlLogix, RightSight, RSLinx, RSNetWorx, VisiSight and Rockwell Software are trademarks of Rockwell Automation, Inc. DeviceNet and EtherNet/IP are trademarks of the Open DeviceNet Vendor Association. Trademarks not belonging to Rockwell Automation are the property of their respective companies.

www.rockwellautomation.com

Power, Control and Information Solutions Headquarters

Americas: Rockwell Automation, 1201 South Second Street, Milwaukee, WI 53204-2496 USA, Tel: (1) 414.382.2000, Fax: (1) 414.382.4444
 Europe/Middle East/Africa: Rockwell Automation NV, Pegasus Park, De Kleetlaan 12a, 1831 Diegem, Belgium, Tel: (32) 2 663 0600, Fax: (32) 2 663 0640
 Asia Pacific: Rockwell Automation, Level 14, Core F, Cyberport 3, 100 Cyberport Road, Hong Kong, Tel: (852) 2887 4788, Fax: (852) 2508 1846